



JAX2

Cologix's Enterprise-Grade Jacksonville Data Center

Quick Facts:

- 125K SQF, custom cabinets & cages
- Direct dark fiber access to 40+ unique networks at JAX1
- Hyper reliable, redundant infrastructure (gens, UPS, cooling)
- Seismic zone 0
- Category 5 hardened facility, capable of stopping 200 mph projectile
- SOC 1 (SSAE18/ISAE3402) SOC 2, HIPAA, PCI DSS
- Disaster recovery suites & offices onsite

30+ Network Neutral Data Centers Throughout North America

U.S.:

Ashburn • Columbus • Dallas
• Jacksonville • Lakeland •
Minneapolis • New Jersey

CAN:

Montreal • Toronto • Vancouver

Tour the JAX2 Data Center:

4800 Spring Park Road,
Jacksonville, Florida

To schedule, contact:

Sales@cologix.com or
+1.855.497.2537

Relentless Infrastructure & Redundancy with Unsurpassed Power

Cologix owns and operates a network neutral, hurricane-rated building in Jacksonville, housing the leading enterprise grade data center and disaster recovery facility in Jacksonville. The Jacksonville facility is unsurpassed in space, power and network services with redundancy as the key feature. The power, network and security are all redundant with automatic backup systems to ensure maximum uptime.

Top Connectivity in Jacksonville

Cologix is your network neutral partner, providing customers with direct, fast interconnection to 8+ unique networks in the company's onsite Meet-Me-Room (MMR). In addition, the site offers dark fiber connectivity to JAX1 with access to 40+ networks and fiber routes to the Caribbean, Central & South America carriers. In addition, Cologix brings the benefits of robust carrier and cloud provider choice to the enterprise environment offering enterprise-grade redundancy and scalability advantages.

Why Cologix Jacksonville?

Cologix Jacksonville offers robust connectivity to Northeast Florida's largest concentration of internet and telecommunications companies in the city's central business district with access to submarine cables and direct fiber to Central & South America. The facility offers customers an express route to South America without traversing through Miami, reducing costs, latency and risk. Customers find the data center's infrastructure, reliability, connectivity, and redundancies best-in-class and appreciate the ease of doing business with Cologix.



cologix

JAX2 JACKSONVILLE DATA CENTER

Site Specifications

JAX2: 4800 Spring Park Road

Site Information

| | |
|----------------------------------|------------------------------------------------------------------------------------------------------------------------------------------------------|
| JAX2 Space: | 125K SQF building |
| Total Jacksonville Space: | 136K+ SQF |
| Building Info: | Renovated in 2009 & 2015, 2 floors, steel frame & brick, Class 5 hurricane rated, seismic 0, outside of the 100 and 500 year floodplains |
| Floor Type: | 24" raised floors |
| Space Configuration: | Hot/cold aisle containment, cabinets, cages & private suites |
| Loading Capacity: | 3,500 lbs/SQF |

Security

| | |
|-----------------------------|---------------------------------------------------|
| Accreditations: | SOC 1 (SSAE18/ISAE3402), SOC 2, HIPPA, PCI DSS |
| Closed-Circuit TV: | Yes |
| Onsite Security: | 24/7 |
| Customized Security: | Yes per client requirements |
| Access: | Biometric, PIN code & Badge |
| Man Traps: | Yes, multi-layered |

Environmental Controls

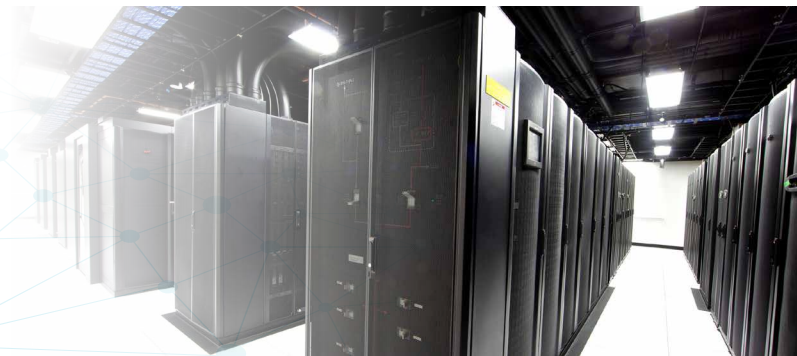
| | |
|----------------------------|----------------------------------------------------------------|
| Cooling Type: | DX Liebert |
| Redundancy: | N+1 dry cooled chillers, N+1 CRAC |
| Humidification: | Yes |
| Fire Protection: | Multi-zone |
| Fire Suppression: | Pre-action systems, multi-stage, zoned & localized dry pipe |
| Remotely Monitored: | Yes |

Power

| | |
|-------------------------------------------------------|---------------------------------------------------------------------------|
| Entrances: | 2N diverse feeds |
| UPS: | 9 Mitsubishi with upgraded cutting edge MIT's Li UPS system |
| Load Design: | 200W/SQF, high density available |
| Configurations: | 2N UPS, N+1 generator |
| Battery Monitoring: | Canara can be monitored and viewed real time |
| ATS: | Yes |
| Battery Redundancy & Generator Backup: | Yes, 35K gallons of fuel onsite to en- sure 5 days of generator backup |
| Utility Power: | 2 x 3.75 MW entrances |

Connectivity

| | |
|----------------------------|------------------------------------------------------------------------------|
| Meet-Me-Room (MMR): | Yes, Cologix controlled |
| Number of Networks: | 40+ unique network providers |
| Network Neutral: | Yes |
| Fiber Entrance: | Yes, diverse building fiber entrances & risers |
| Cross Connects: | Copper, fiber |
| Metro Connect: | Yes, via dark fiber ring to JAX1 Meet-Me-Room @ 421 West Church Street |



Customer Support

24/7 local engineers, support teams, NOC,
Cologix Command DCIM
Self-service online customer care portal

WWW.COLOGIX.COM
L19V4-JAX2