



# COL1

## Most Densely Connected Carrier Hotel in the Region

### Quick Facts:

- Sits at golden triangle of Washington DC, New York & Chicago
- High density enabled, up to 20kW+ per cabinet
- 50+ unique carriers plus Ohio-IX
- Most densely connected interconnect site in the region with dark fiber network access

### 30+ Network Neutral Data Centers Throughout North America

#### U.S.:

Ashburn • Columbus • Dallas  
• Jacksonville • Lakeland •  
Minneapolis • New Jersey

#### CAN:

Montreal • Toronto • Vancouver

**Tour the COL1 Data Center:**  
555 Scherers Court  
Columbus, Ohio

**To schedule, contact:**  
Sales@cologix.com or  
+1.855.497.2537

### Top Uptime, Redundancy & Access

Combining the most robust enterprise-grade infrastructure with the most densely connected interconnect site in the region, COL1 offers 28K SQF at 535 Scherers Court, the ideal location for primary IT deployments that require 100% uptime and network performance, even the backups have backups for fault-tolerant, seamless, end-to-end system.

### Unmatched Connectivity at Cologix Columbus Data Center Campus

Customers access 50+ unique networks in the Meet-Me-Room (MMR) and other tenants in the Cologix-owned facility. The networks in Cologix's MMR represent international backbones as well as regional fiber networks, linking global content to Ohio's enterprises, consumers and Ohio-IX internet exchange, 30+ public, private and hybrid cloud service providers, including AWS, Microsoft Azure, Google Cloud Platform, IBM Cloud and Oracle FastConnect.

### Why Cologix Columbus?

Within a 10-hour drive of 47% of the U.S. population, Cologix Columbus offers robust infrastructure with the top connectivity. Ideally located for primary IT deployments, it is a perfect location for disaster recovery deployments, backing up primary sites in Chicago and New York. Cologix Columbus offers reliability, upgrades, and redundancies augmented by the ease of doing business with us.



cologix

**COL1 COLUMBUS DATA CENTER**

# Site Specifications

## COL1: 555 Scherers Court

### Site Information

<b>COL1 Space:</b>	28K SQF
<b>Total Columbus Campus:</b>	200K+ SQF total (8 acres)
<b>Building Info:</b>	Colocation data center since 2007, 1 floor, reinforced concrete & steel with dual roof system, seismic zone 1
<b>Floor Type:</b>	Anti-static raised floor
<b>Space Configuration:</b>	Custom cabinets & cages
<b>Loading Capacity:</b>	1,250 lbs/SQF with dedicated, sunken loading deck

### Security

<b>Accreditations:</b>	Uptime Tier III certified, SOC 1 & SOC2 Type 2 audited
<b>Closed-Circuit TV:</b>	CCTV with recordings kept for 90 days
<b>Onsite Security:</b>	24/7
<b>Customized Security:</b>	Yes, per client requirements
<b>Access:</b>	Biometric, PIN code & badge
<b>Man Traps:</b>	Yes

### Environmental Controls

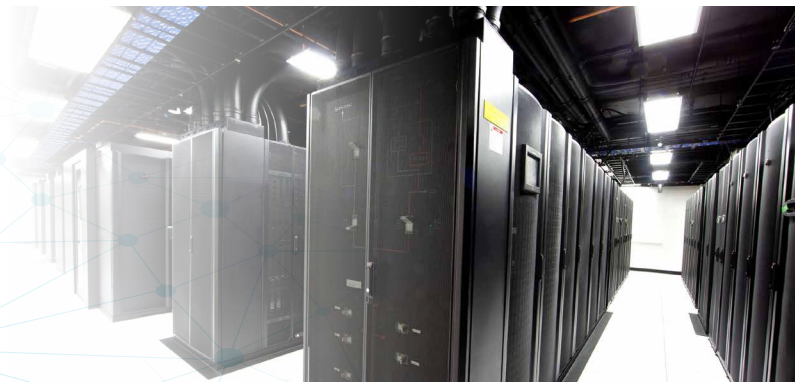
<b>Cooling Type:</b>	Combination of Trane AHUs, Liebert CRAHs
<b>Redundancy:</b>	N+1
<b>Humidification:</b>	Yes, centralized
<b>Fire Protection:</b>	Multi-zone
<b>Fire Suppression:</b>	Pre-action systems, multi-stage, zoned & localized dry pipe
<b>Remotely Monitored:</b>	Yes

### Power

<b>Entrances:</b>	2N diverse feeds
<b>UPS:</b>	Liebert UPS
<b>Load Design:</b>	5 kW per cabinet
<b>Battery Monitoring:</b>	Canara intelligent battery monitoring
<b>ATS:</b>	Yes
<b>Battery Redundancy:</b>	Yes, 2 x 1.5 MW Caterpillar with fuel capacity for 72 hours
<b>Utility Power:</b>	30 MW+ utility available on campus

### Connectivity

<b>Meet-Me-Room (MMR):</b>	Yes, Cologix controlled
<b>Number of Networks:</b>	50+ unique network providers
<b>Network Neutral:</b>	Yes
<b>Fiber Entrance:</b>	16+
<b>Cross Connects:</b>	Copper, fiber, virtual
<b>Metro Connect:</b>	Dark fiber available
<b>Internet Exchange:</b>	Yes, access to Ohio-IX
<b>Communications:</b>	Internet bandwidth services available



#### Customer Support

24/7 local engineers, support teams, NOC,  
Cologix Command DCIM  
Self-service online customer care portal  
Onsite master electrician

[WWW.COLOGIX.COM](http://WWW.COLOGIX.COM)  
L19V2-COL1